



Introduction to Workday Financials

Prerequisite Course



UNIVERSITY
of VIRGINIA

Introduction | Course Objectives

After completing this course, you will understand:

- An overview of Workday Financial Management
- An overview of the key dimensions of the Foundation Data Model (FDM) and its importance
- What worktags are and the different types
- How worktags are used in business transactions
- How to pull worktags

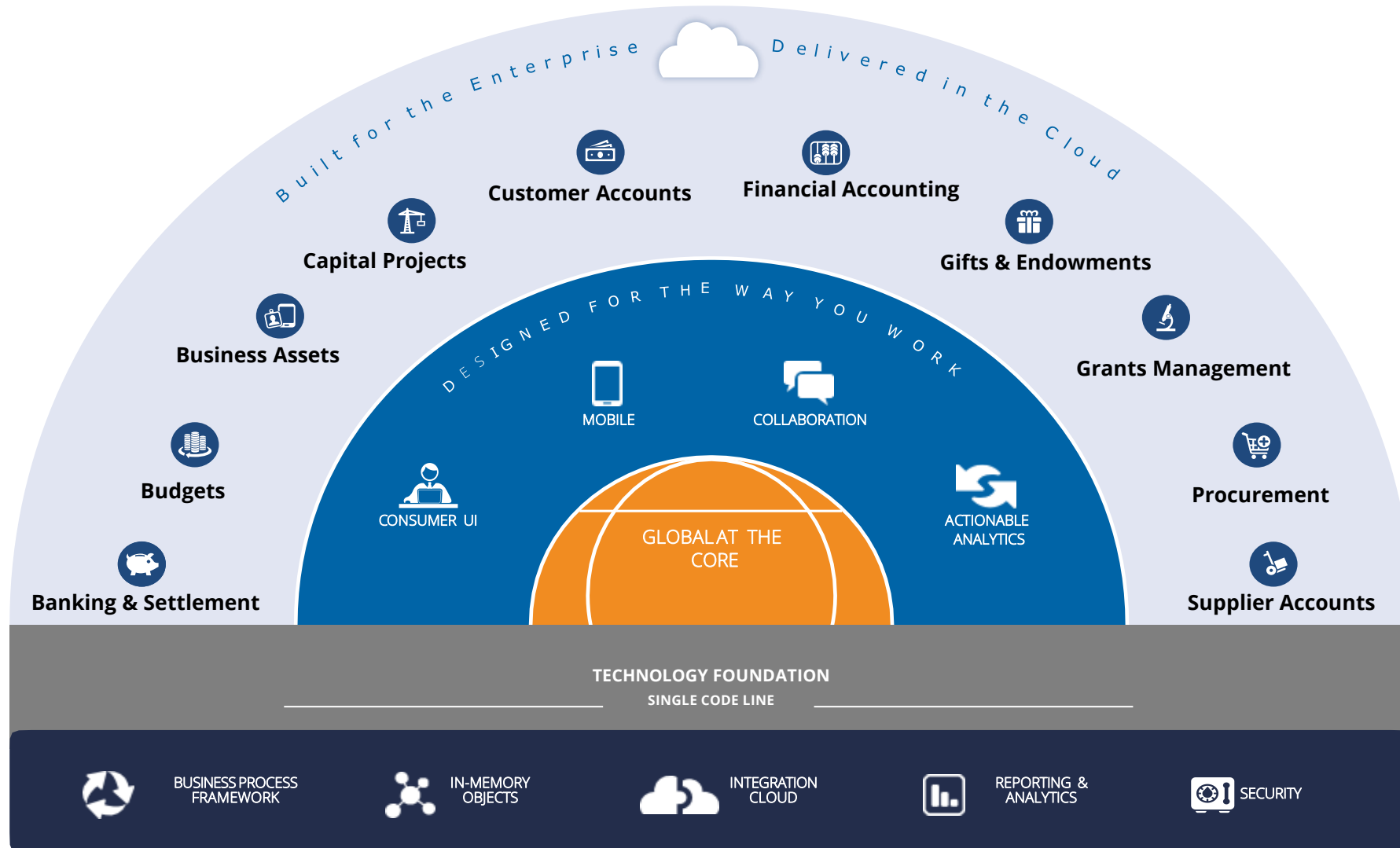




Workday Overview

Workday Overview | What is Workday?

UVA Workday Financial Management Capabilities in Scope



Foundation Data Model (FDM) Overview



FDM Overview | What is FDM?

The **Workday Foundation Data Model (FDM)** is the **data model used for Financials** that establishes the foundation for **Workday transaction processing** and **reporting**.

The FDM is designed to answer the following questions:



FDM Overview | Why is it Important?

Business Transactions

- Accounting Journals
- Ad-hoc Payments
- Customer Invoices
- Requisitions
- Supplier Invoices
- Settlement

Business Transactions

FDM Design

Reporting

Security

Reporting

- Real-time, actionable, and drillable
- Filter and analyze using financial and non-financial dimensions
- Standardize financial, operational and management reports

Security

- Which transactions can I initiate?
- Which transactions can I review or approve?
- Who approves my transactions?
- What transactions can I see?
- For which organizations can I see transactions?

FDM Overview | What's Changing?

**Oracle
Chart of Accounts**

Ledger (GL String)/Sub-Ledger (PTAO)

You enter **one complete string** that is linked together for business transactions.



**Workday
FDM Dimensions**

Flat Chart

You will have the **flexibility to select a combination of worktags** in Workday for business transactions.

Worktags



Worktags | What is a worktag?

Worktags are **keywords or dimensions** that you **can assign to transactions** and supporting data to make the business purposes clear and establish common relationships through classification.

Organization Worktags



Company



Cost Center



Fund



Business Unit



Function



Designated



Gift



Grant



Project



Program



Assignee



Activity



Location



Loan



Internal
Reference

Accounting Worktags



Ledger
Account



Revenue
Category



Spend
Category



Sales Item



Expense
Item

Worktags | Why Do We Use Worktags?

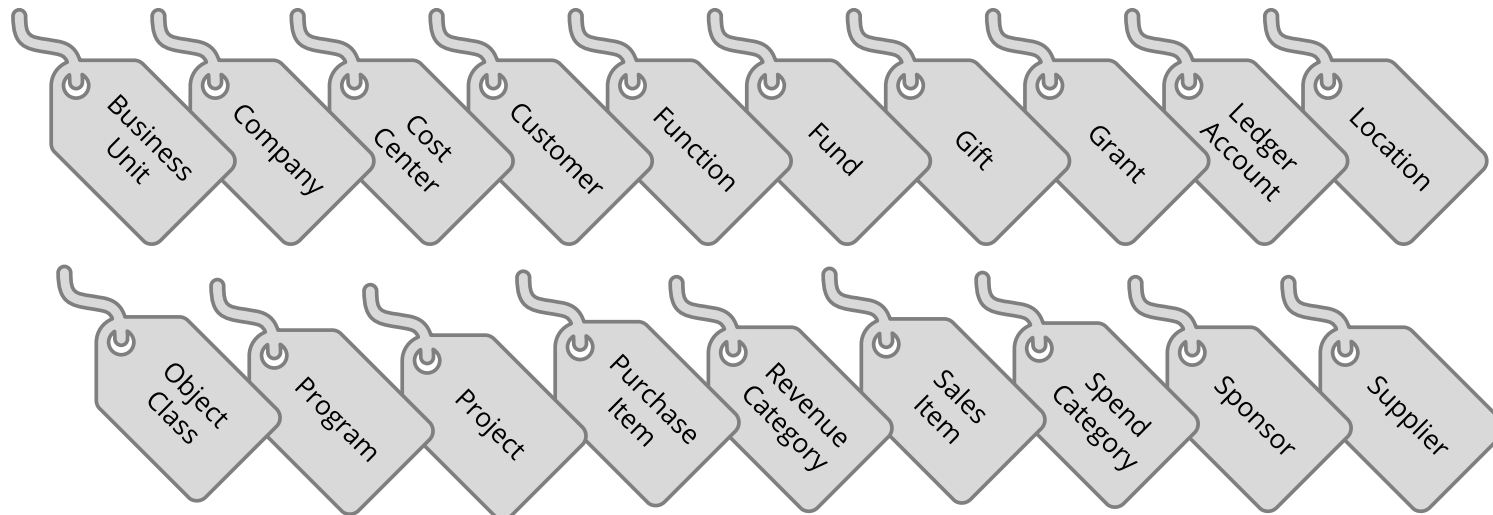
Worktags help with more than just bookkeeping, they also :

Define Security and approval Workflows

Drive ledger account assignment

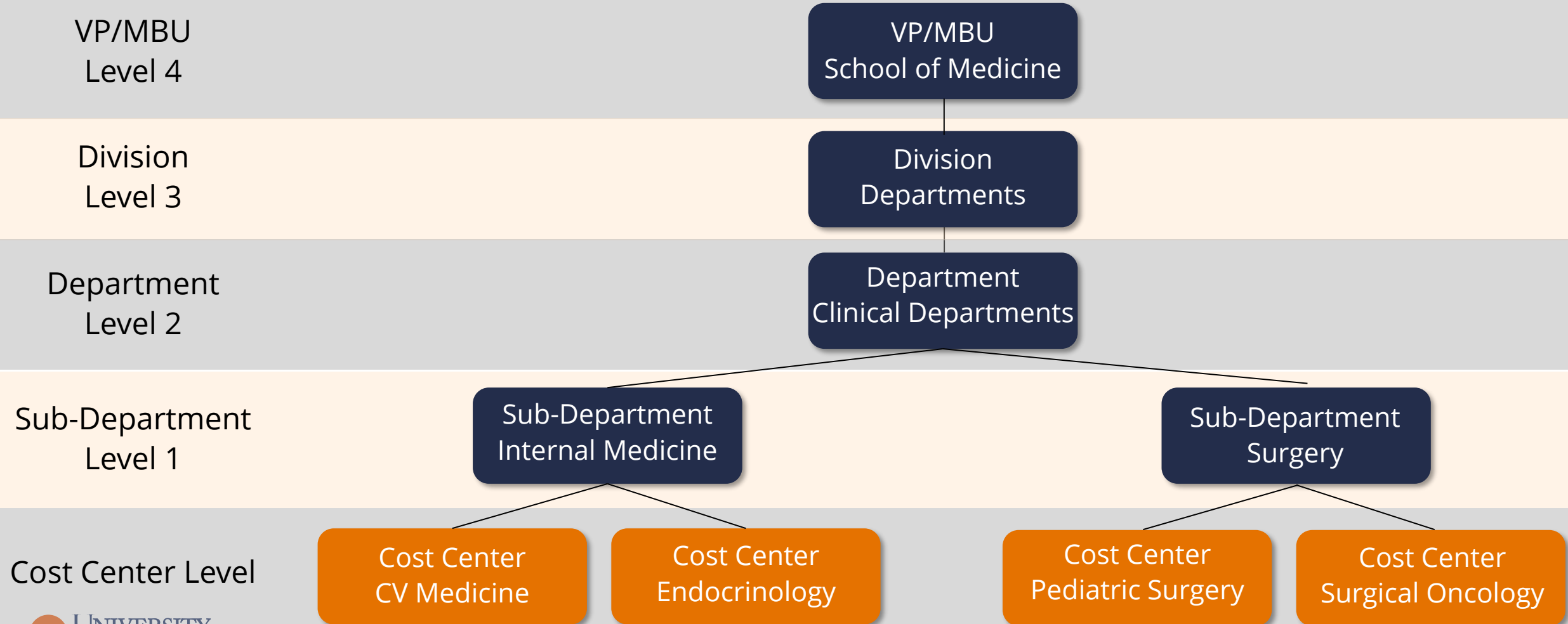
Relate financial and non-financial dimensions

Examples of Worktags



Worktags | Cost Center Hierarchy

A Cost Center Hierarchy is a grouping of cost centers where transactional data is consolidated based on level. It is used in reporting to view the summary data based on the level represented in the cost center hierarchy.



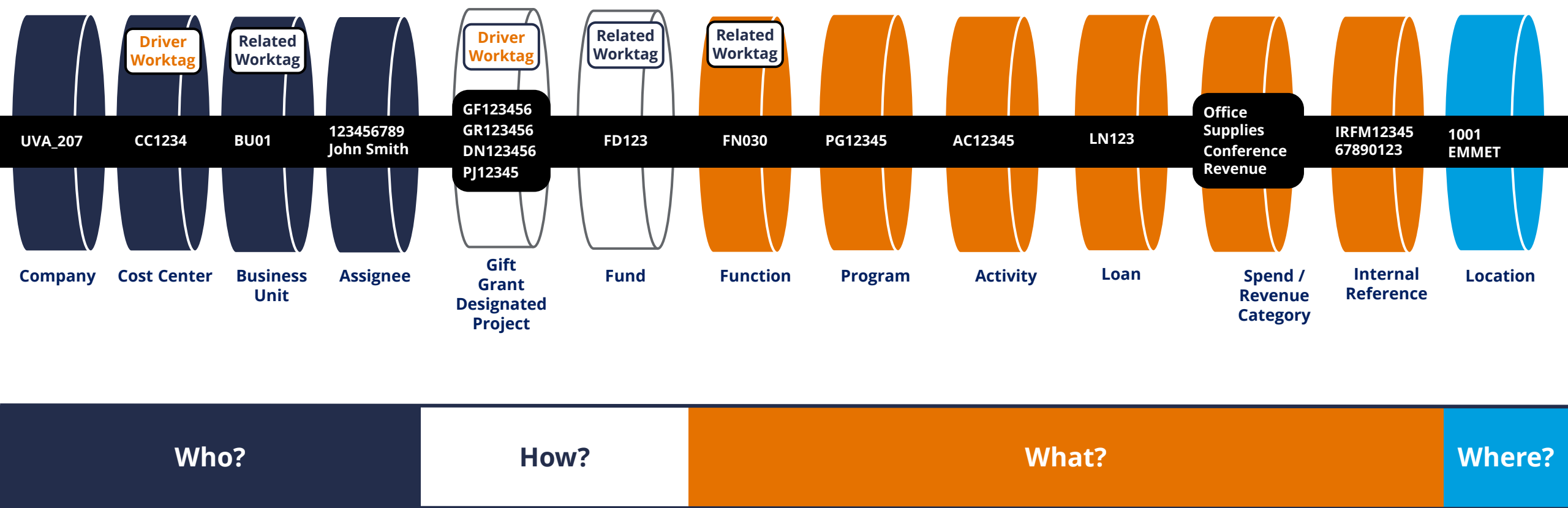
Worktags | Cost Center Hierarchy



All Cost Centers	All Cost Centers	All Cost Centers	Level 8	Top Level
President	President	President	Level 7	President
EVP / Provost	EVP / Provost	EVP / Provost	Level 6	Executive Vice Presidents
Schools	Auxiliaries	Central Units	Level 5	Additional Grouping Level
School of Medicine	Athletics	UVAFinance	Level 4	VP/School Dean [MBU]
Departments	Units	AVPFO	Level 3	Division
Clinical Departments	Support Units	Payroll	Level 2	Department
MD-PEDT Pediatrics	Student Wellness	Payroll	Level 1	Sub-Department
CC1234 MD-PEDT Endocrinology	CC5678 Sports Medicine	CC0003 Payroll Operations		Cost Center [Leaf]

Worktags | How Are Worktags Represented in Transactions?

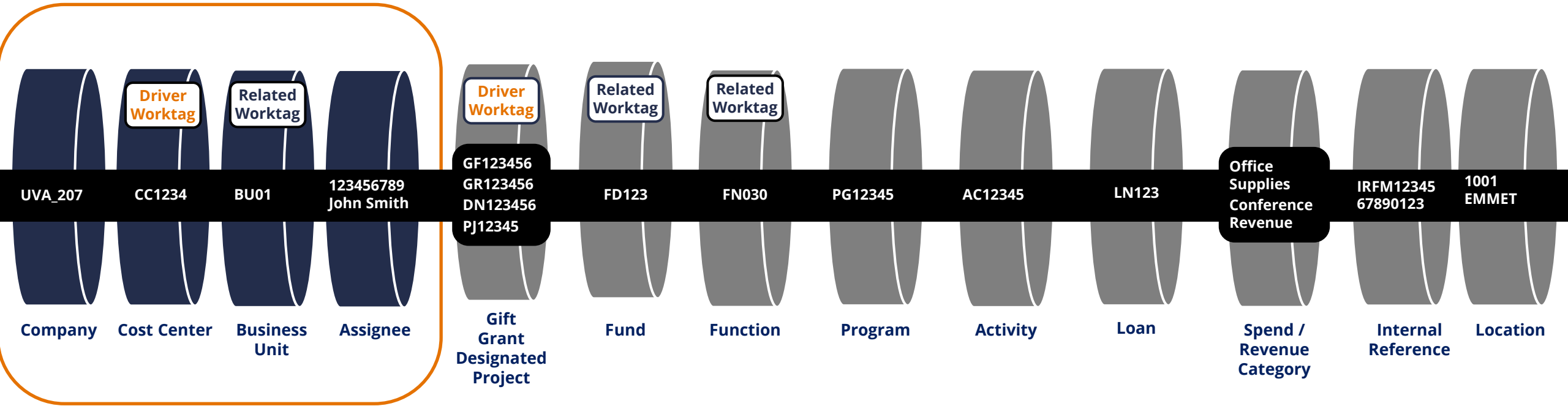
Worktags in FDM can be used to categorize and answer key questions on a transaction such as **Who**, **How**, **What**, and **Where**.



Worktags | How Are Worktags Represented in Transactions?

Worktags can identify **Who** is involved in the transaction such as which **organization** or **person**.

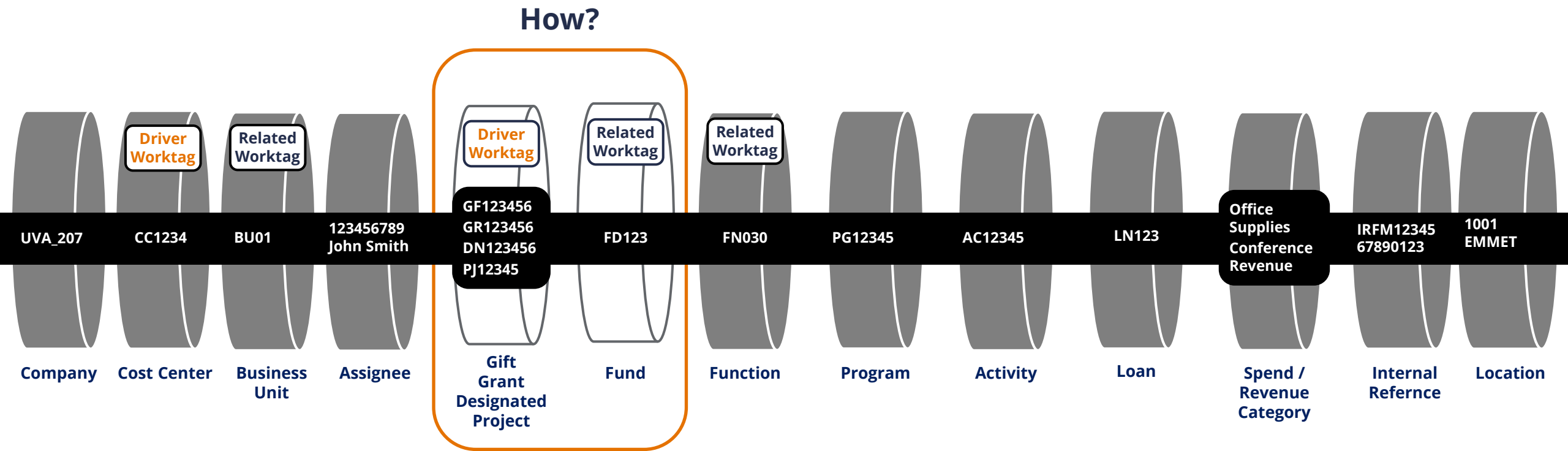
Who?



Which legal entity?
Which MBU?
Which organization?
Which person?

Worktags | How Are Worktags Represented in Transactions?

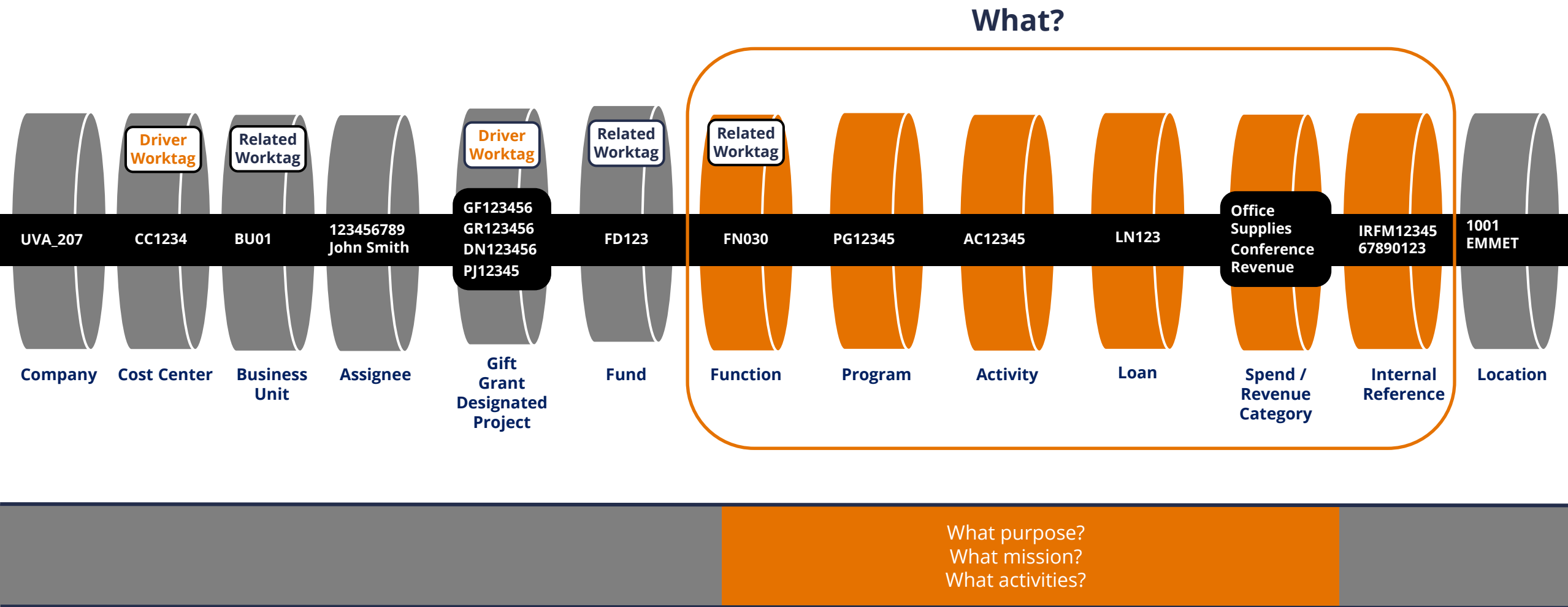
Worktags can identify **How** a transaction is categorized such as **type of fund**.



What type of funds?
What specific funding source?

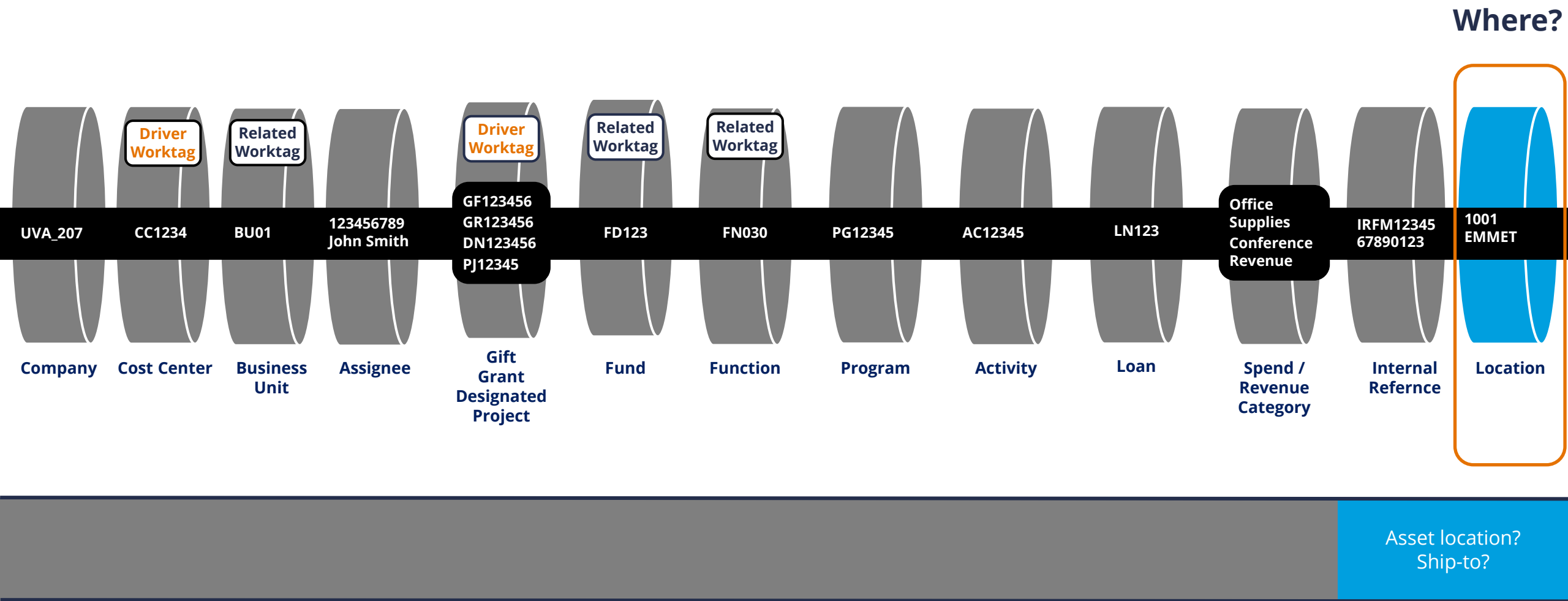
Worktags | How Are Worktags Represented in Transactions?

Worktags can identify **What** is driving the transaction such as the **purpose or activities**.



Worktags | How Are Worktags Represented in Transactions?

Worktags can identify **Where** the transaction took place such as the **asset location**.



Worktags | From Oracle to Workday

The following represents a sample business transaction in **Oracle**.

P T A E O

Office supplies are purchased as part of an ongoing project funded by a gift.

GA String	Project						Task			Award							Expenditure Type		Organization				
	MD-INMD-CV Ball, FM Professor						Task 1			MD-INMD-CV Ball Prof							Supplies, Office		MD-INMD CV Medicine				
	1	0	4	1	7	5	1	0	1	E	R	0	0	8	9	7	Supplies, Office		4	0	7	3	5

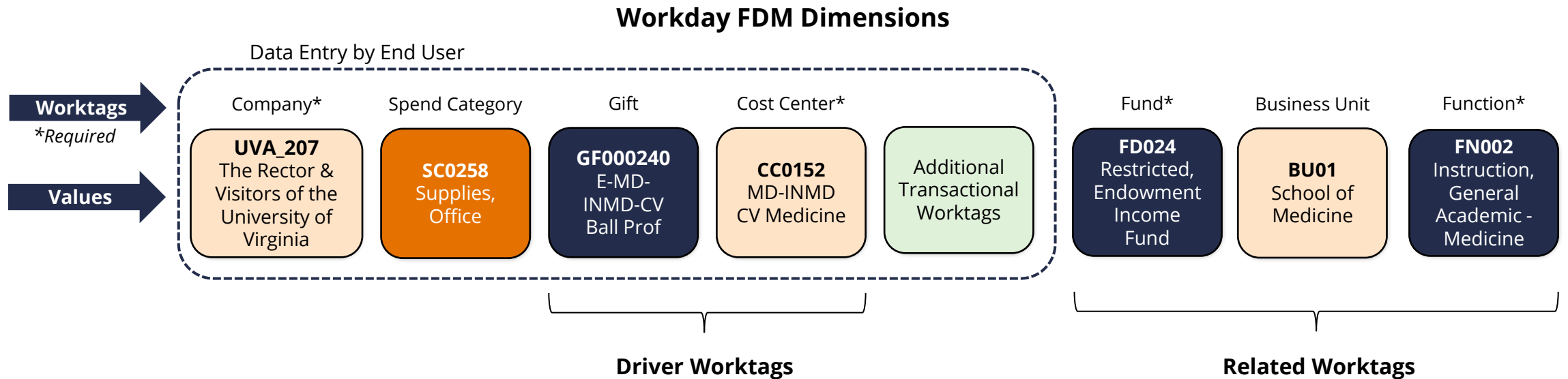
GL String	Entity		Fund				GL Project						Object Code				Organization (Project Owning)				
			Restricted & True Endow Funds-Expendable (Local)				MD-INMD-CV Ball, FM Professor						Supplies, Office				MD-INMD CV Medicine				
	1	0	4	0	0	6	1	0	4	1	7	5	6	5	1	5	4	0	7	3	5



In Workday

Worktags | From Oracle to Workday

The following represents a sample business transaction in **Workday**.



Worktags | From Oracle to Workday

Oracle COA

Office supplies are purchased as part of an ongoing project funded by a gift.

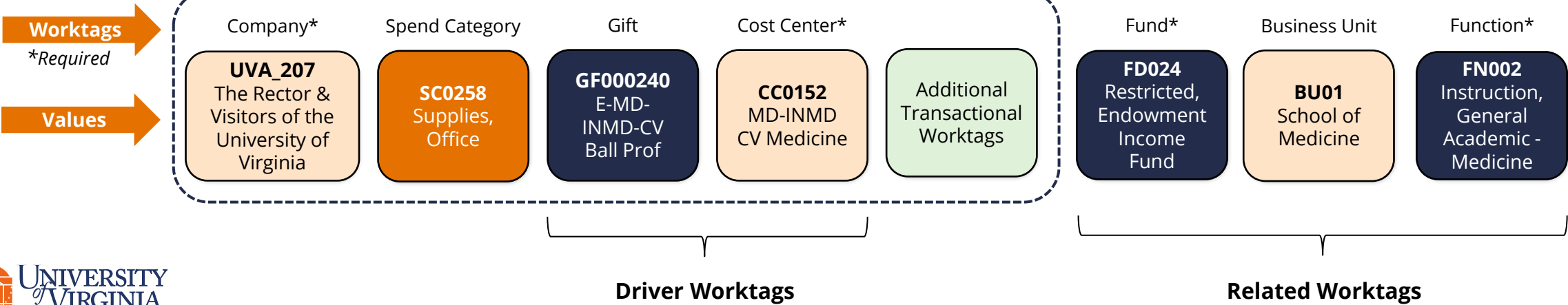
GA String	Project						Task			Award						Expenditure Type		Organization				
	MD-INMD-CV Ball, FM Professor						Task 1			MD-INMD-CV Ball Prof						Supplies, Office		MD-INMD CV Medicine				
	1	0	4	1	7	5	1	0	1	E	R	0	0	8	9	7		4	0	7	3	5

GL String	Entity		Fund				GL Project						Object Code				Organization (Project Owning)				
			Restricted & True Endow Funds-Expendable (Local)				MD-INMD-CV Ball, FM Professor						Task 1				MD-INMD CV Medicine				
	1	0	4	0	0	6	1	0	4	1	7	5	6	5	1	5	4	0	7	3	5



Workday FDM Dimensions

Data Entry by End User



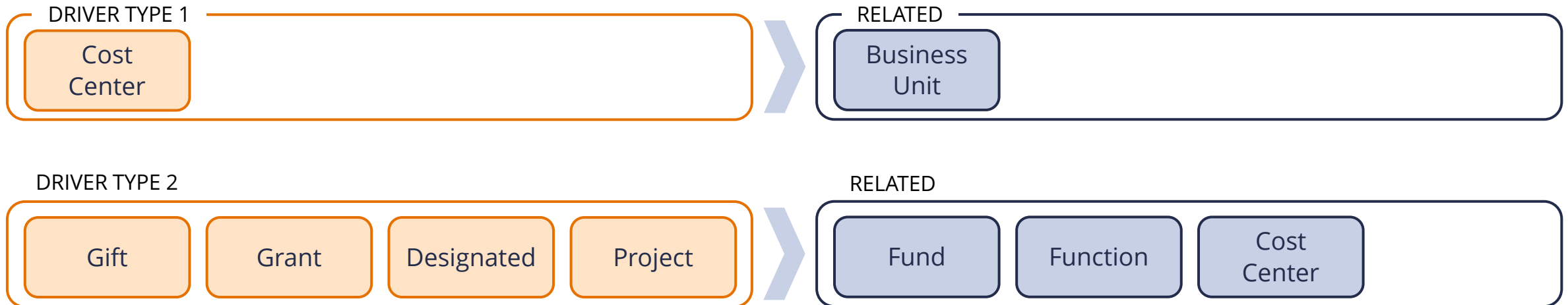
Worktags | Driver & Related Worktags

Driver Worktag

- Used to facilitate ease of transaction entry
- Assigned additional related worktags, which will automatically default onto business transactions

Related Worktag

- Assigned to driver worktags, as applicable, when the driver worktag is created
- Automatically default onto business transaction when the driver is selected



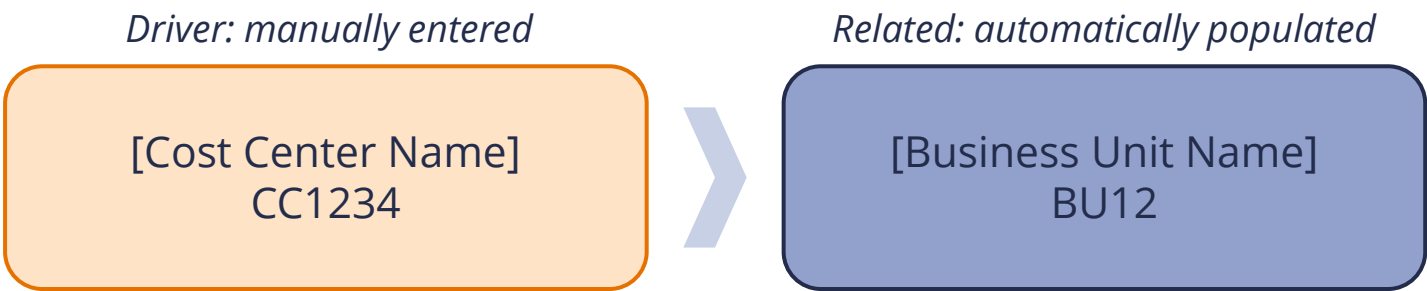
*Driver Type 2 related worktags *may vary* based on usage.

Worktags | Driver & Related Worktags Example

Related worktags are not manually entered onto the business transaction, they auto-populate based on the selected driver worktags.

Driver Worktag	Related Worktags						
	Cost Center	Fund	Program	Function	Gift	Grant	Business Unit
Cost Center							✓

Example of what this looks like in Workday:



Worktags | Driver & Related Worktags Example

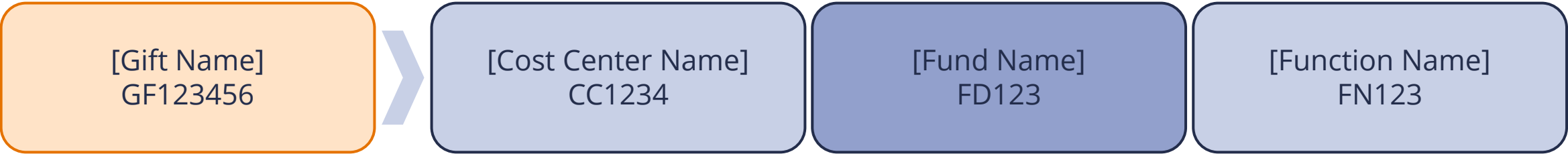
Related worktags are not manually entered onto the business transaction, they auto-populate based on the selected driver worktags.

Driver Worktag	Related Worktags							
	Cost Center	Fund	Program	Function	Gift	Grant	Designated	Business Unit
	*	✓		*				

Example of what this looks like in Workday:

Driver: manually entered

Related: automatically populated



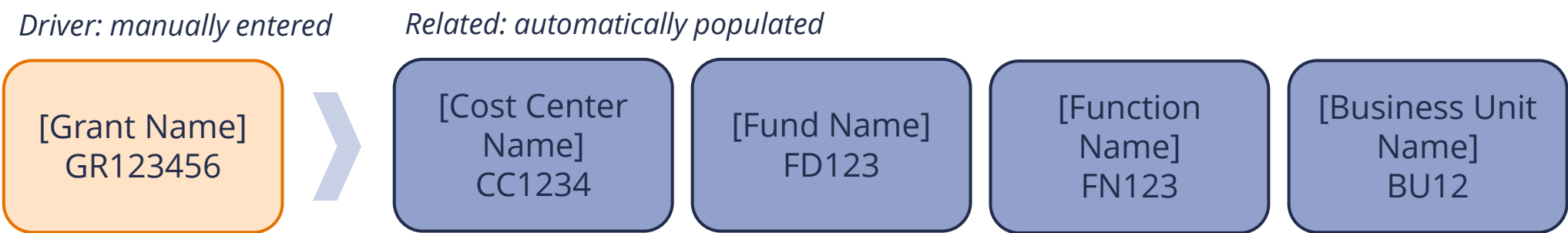
*Gift *always* relates fund, and it *sometimes* relates cost center and function

Worktags | Driver & Related Worktags Example

Related worktags are not manually entered onto the business transaction, they auto-populate based on the selected driver worktags.

Driver Worktag	Related Worktags						
	Cost Center	Fund	Program	Function	Gift	Grant	Designated
Grant	✓	✓		✓			✓

Example of what this looks like in Workday:



Worktags | Driver & Related Worktags Example

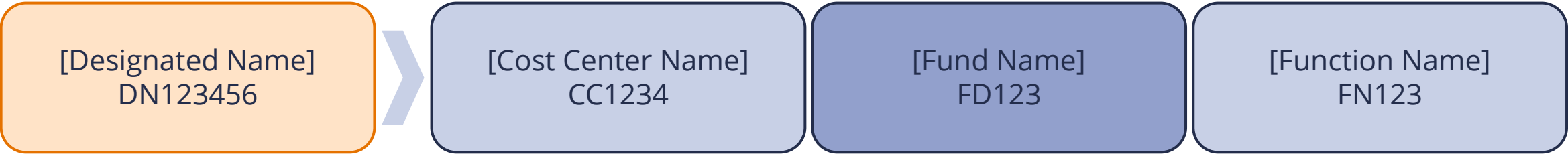
Related worktags are not manually entered onto the business transaction, they auto-populate based on the selected driver worktags.

Driver Worktag	Related Worktags						
	Cost Center	Fund	Program	Function	Gift	Grant	Business Unit
Designated	*	✓		*			

Example of what this looks like in Workday:

Driver: manually entered

Related: automatically populated



*Designated *always* relates fund, and it *sometimes* relates cost center and function

Worktags | Driver & Related Worktags Example

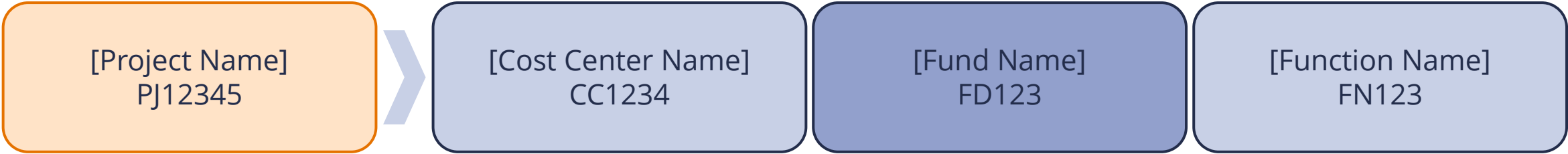
Related worktags are not manually entered onto the business transaction, they auto-populate based on the selected driver worktags.

Driver Worktag	Related Worktags						
	Cost Center	Fund	Program	Function	Gift	Grant	Designated
Project*	✓	✓		✓	*	*	*

Example of what this looks like in Workday:

Driver: manually entered

Related: automatically populated



*Gift/Grant/Designated and their appropriate Funds will be added to Project transaction lines as a result of the Multiple Funding Sources (MFS) allocation process. Operational transactions will only require a Project and its related worktags to be populated.



FDM Application

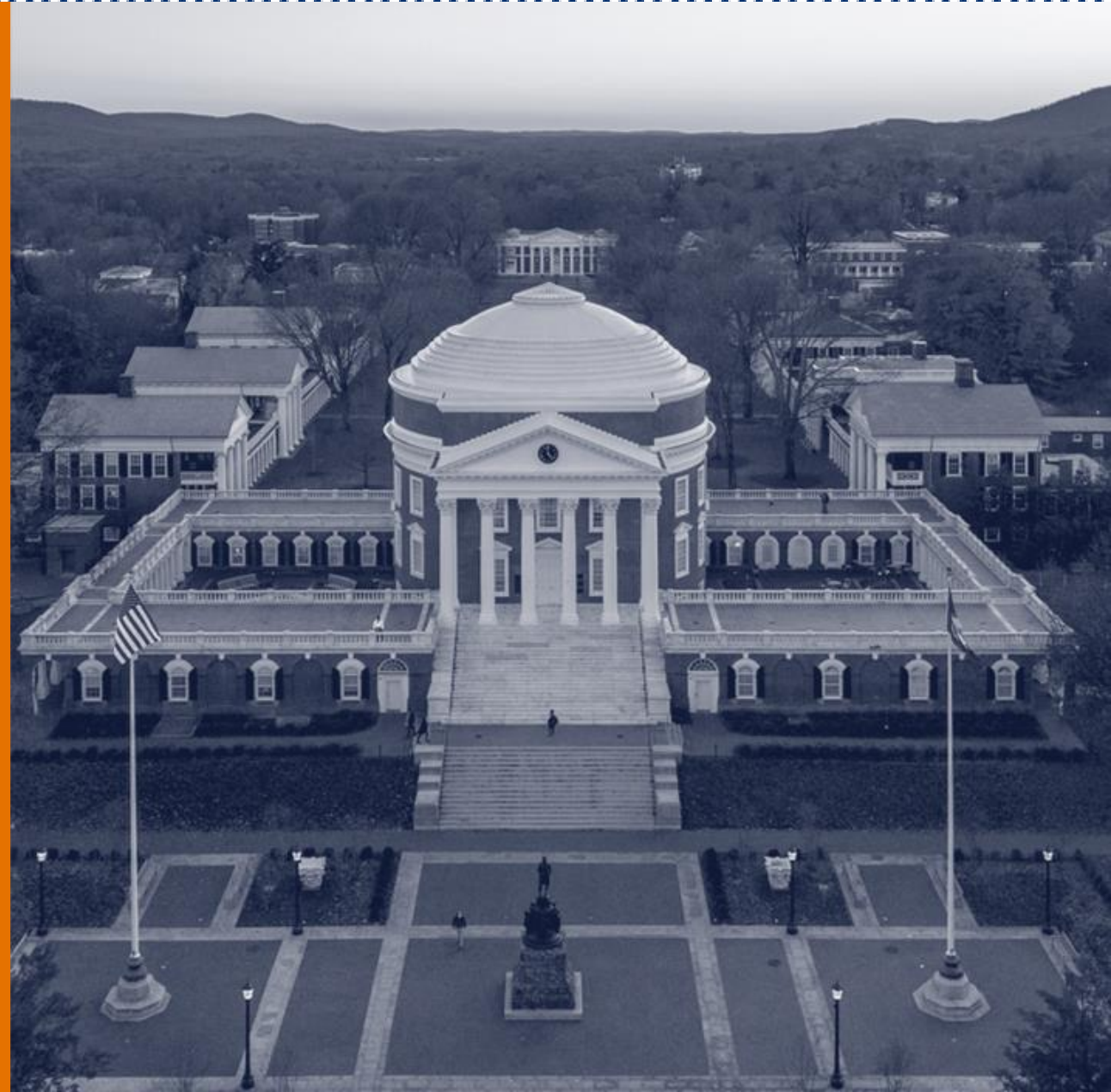
FDM Application | How to Pull Worktags



FDM Application | Examples & Usages

We will now review a few examples and usages of FDM Worktags in Workday.

- The application of worktags when creating an expense report in Workday
- The application of worktags when creating a journal in Workday
- How to pull a FDM Report to find specific worktags in Workday



Course Wrap-Up | Course Summary

Now that you have completed this course you will be able to:

- Provide an overview Workday Financial Management
- Explain the key benefits of Workday Financial Management
- Provide an overview of the key dimensions of Foundation Data Model (FDM)
- Explain what worktags are and the different types
- Understand how worktags are used in business transactions
- Understand how to pull worktags



Thank you!